



Nature's integration
in cities' hydrologies,
ecologies and societies

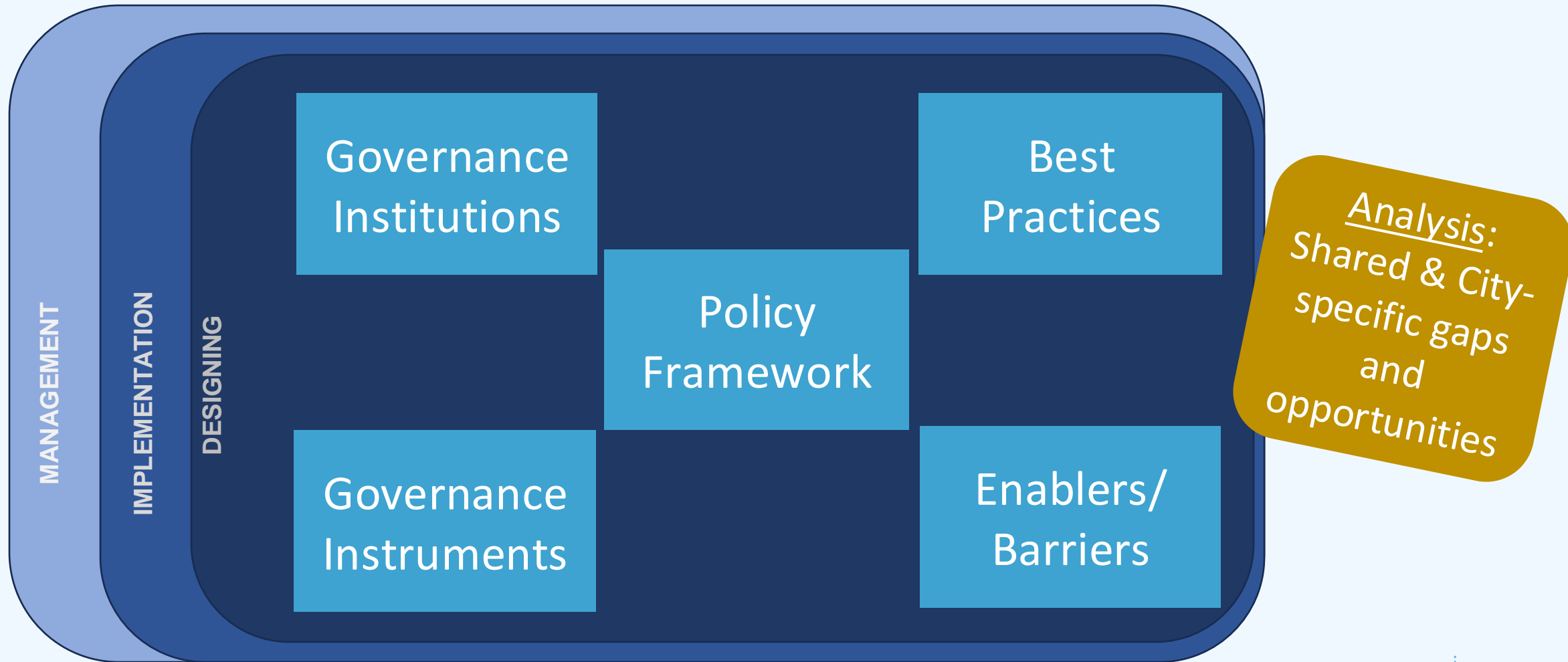
Governance of urban water management: Best-practice examples of NICHES case studies

Ida Meyenberg
Ecologic Institute, Berlin

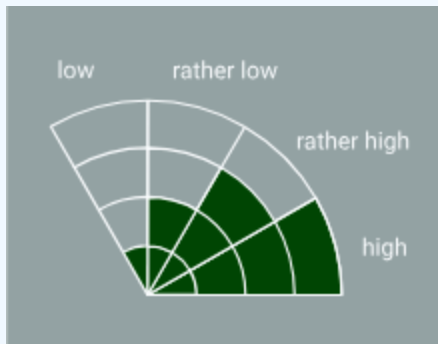
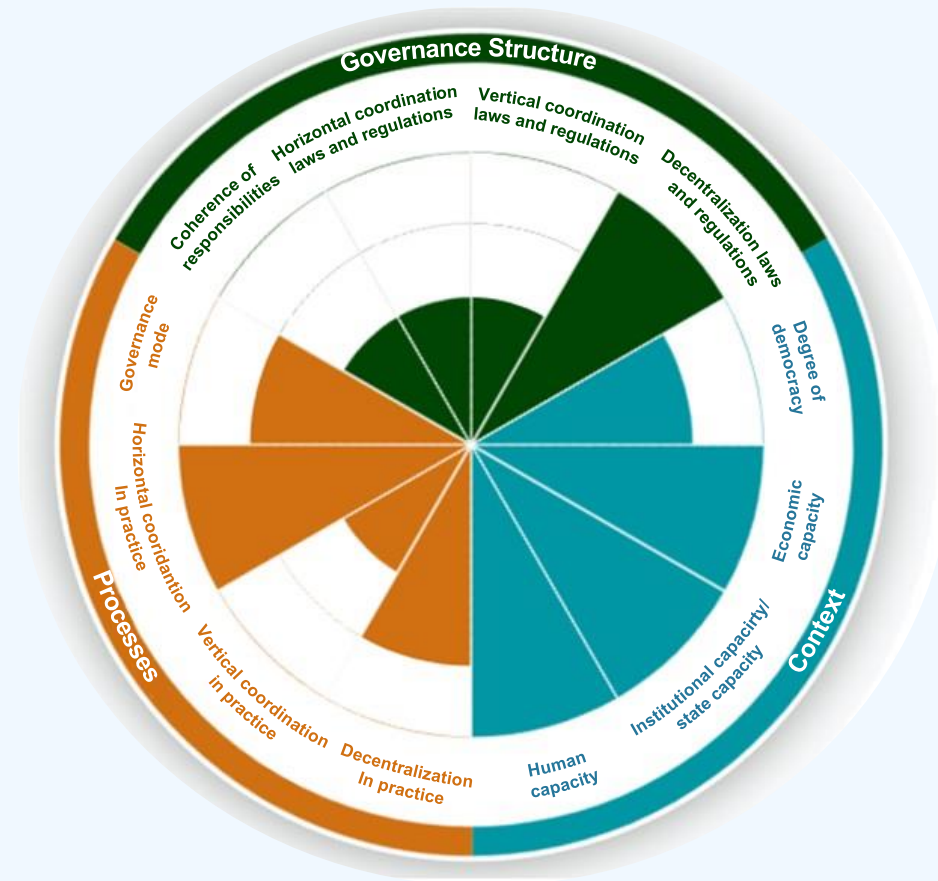
Conference: Bringing forward Nature-based Solutions in Major Cities| 24.03.2025



Methodology: Assessment of governance frameworks

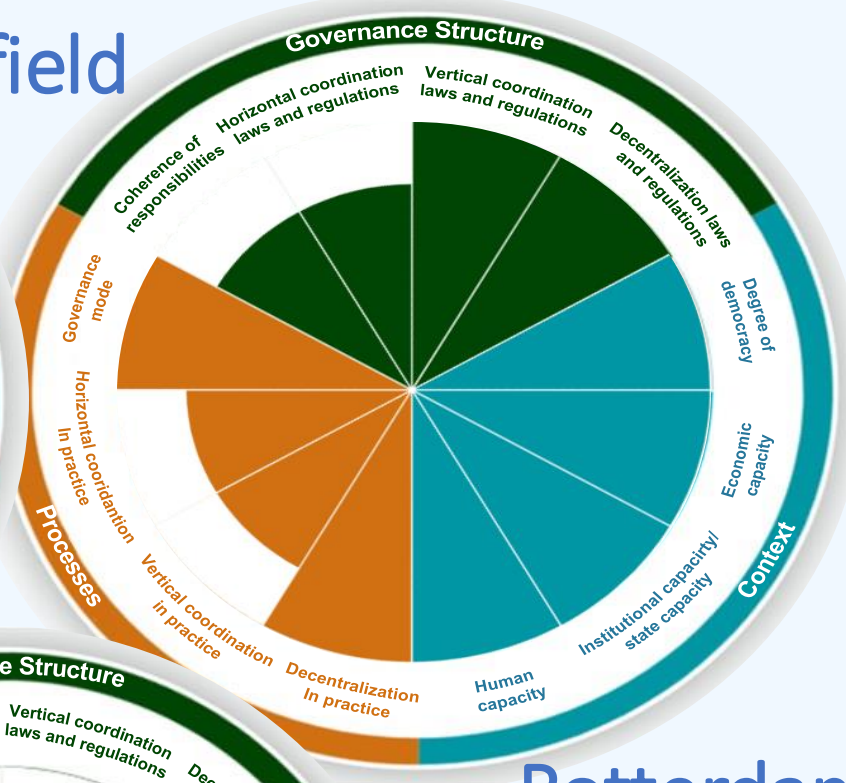
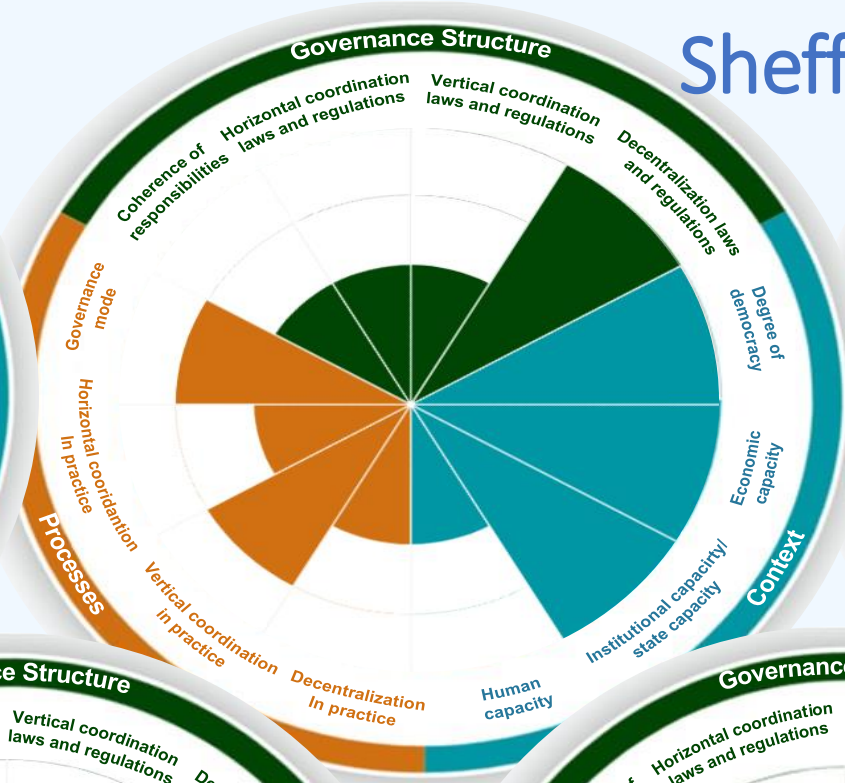
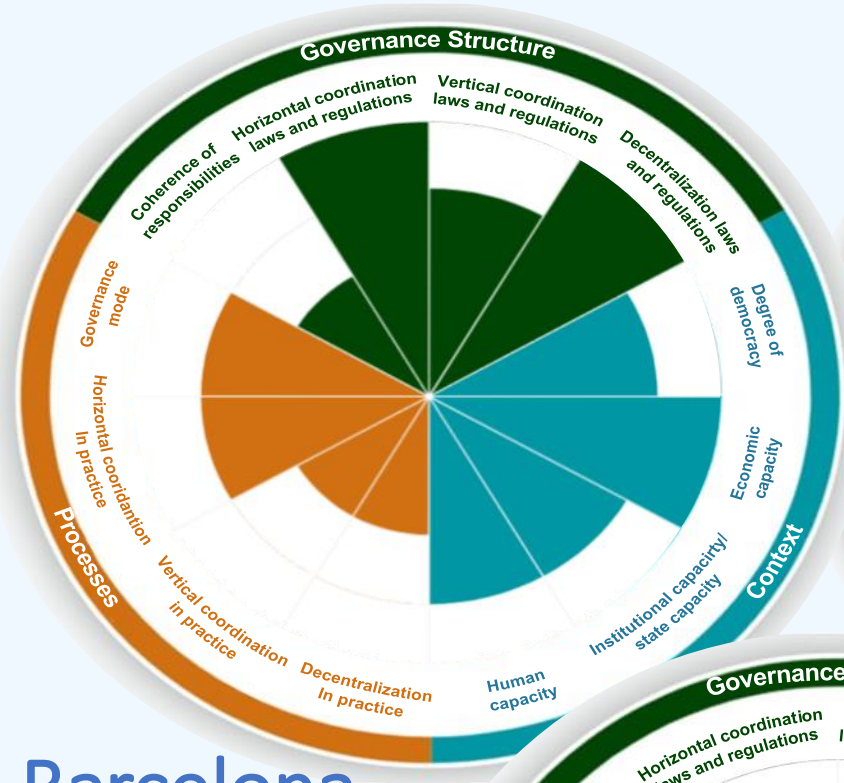


Analysis through Diagnostic Water Governance Tool (STEER)

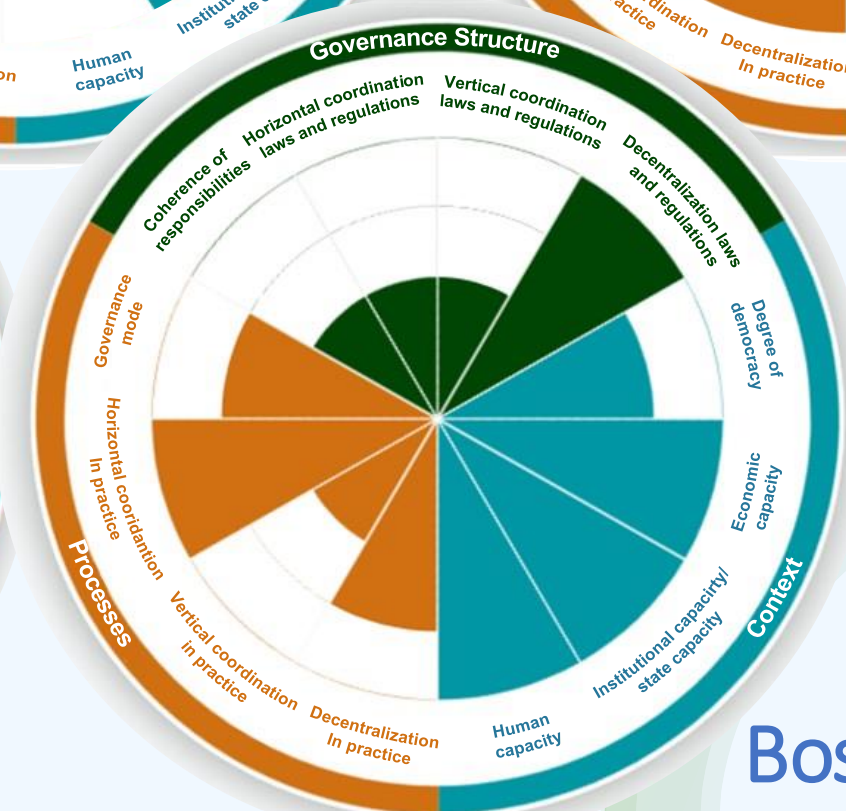


Boston

Sheffield

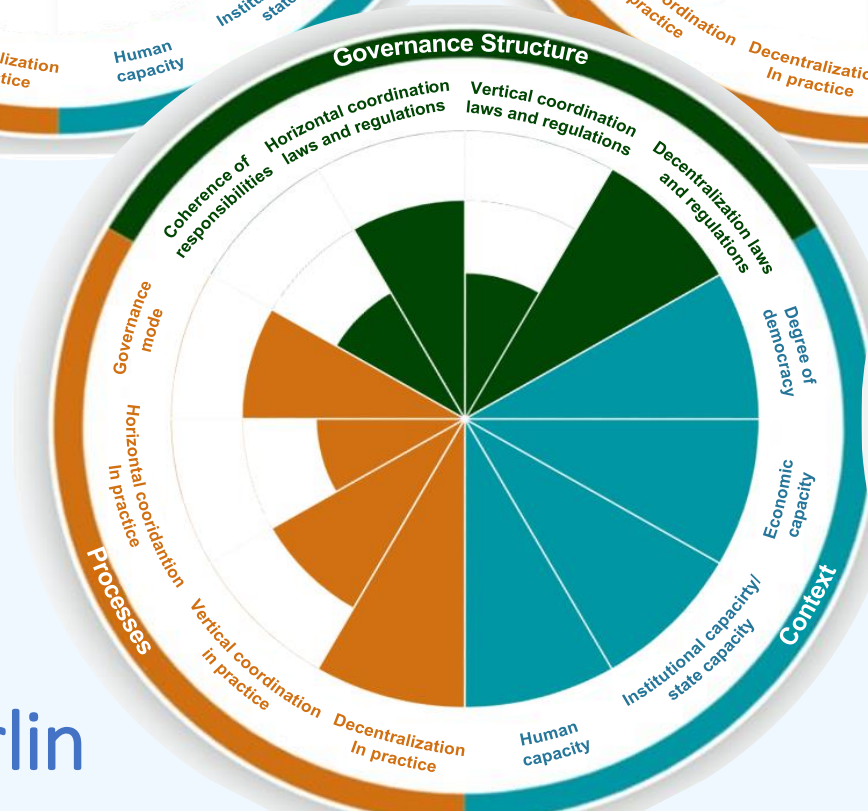


Rotterdam

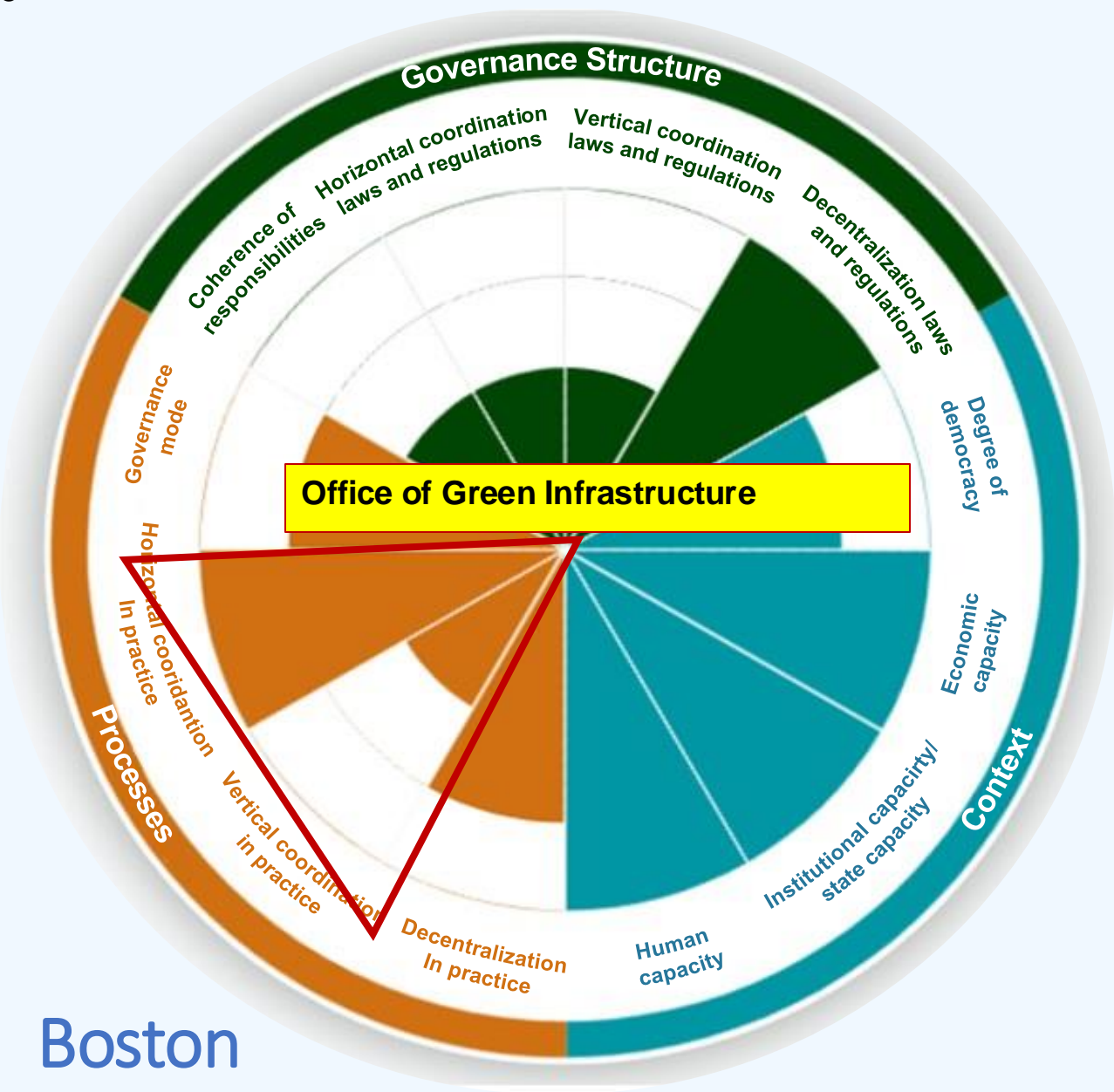


Boston

Berlin



Barcelona



Enabler

- 💧 Enhancing citizen engagement through collective action (1):
- 💧 *„Tegelwippen“ (tile flipping) Rotterdam*
- 💧 *(national competition integrated as measure in local adaptation strategy)*



TEGELTELLER
4.604.709
GEWIPTE TEGELS IN 2024

13.528.105
TOTAAL GEWIPPT
IN ALLE JAREN



Enabler



KWB

Berliner
Regenwasseragentur



© OGI Boston

💧 Cross-sector collaboration and supportive institutional environment

*Boston Office of Green Infrastructure
Kompetenzzentrum Wasser Berlin
Rainwater agency Berlin*

Enabler



- 💧 Guidance and vision through „Master Planning“
- 💧 *NL Environmental Act 2024 („Omgevingswet“) | Rotterdam Weerwoord*
- 💧 *National Climate Adaptation Strategy | Berlin Water Law*
- 💧 *USA Clean Water Act | Boston Green Infrastructure Policy*

Enabler

- 💧 Mix of traditional and innovative approaches (incl. digital tools)
- 💧 *Berlin's GründachPLUS Funding Scheme*
- 💧 *Dutch Omgevingsloket (Digital Environmental desk) as part of Environmental Act 2024*
- 💧 *Berlin's Digital Planning Table and Cost Calculator*



© Patrick Brendel, Regenwasseragentur

6 Major Barriers to NBS implementation:

1. Lack of collaborative governance / central coordination office for NBS
2. Knowledge and data challenges
3. Insufficient “master planning” or holistic policy frameworks
4. Low private sector engagement
5. Challenging citizen engagement and support
6. Competition over urban space (below and above ground)

Conclusion

Policy Brief: soon to come

- 💧 Success levels of NBS adoption influenced by governance structures and policy frameworks
- 💧 All five cities score the lowest in DW/G 'Coherence of responsibilities' --> shared barrier, great opportunity for governance improvement
- 💧 Use of digital tools in stormwater management builds capacities for citizen engagement
- 💧 Institutional fragmentation and competing priorities in administration Clash with multi-functionality of NbS



Nature's integration
in cities' hydrologies,
ecologies and societies

Thank you for your attention!

Ida.meyenberg@ecologic.eu
Find me on LinkedIn



niches-project.eu



NICHES Newsletter



Ida.meyenberg@ecologic.eu



@NICHES_project



@nichesproject



Funded by
the European Union

This project was funded through the 2020-2021 Biodiversa and Water JPI joint call for research proposals, under the BiodivRestore ERA-Net COFUND programme, and with the funding organisations: German Federal Ministry of Education and Research, Agencia Estatal de Investigación española, Ministry of Agriculture, Nature and Food Quality of the Netherlands. NICHES is coordinated by the Ecologic Institute.